

railcore

G) Sides Installation

Written By: Ben Withem



**TOOLS:**

- [Allen Key](#) (1)

**PARTS:**

- [Acrylic Sides](#) (4)
- [73 mm 1515 Extrusion](#) (4)
- [Printed Feet](#) (4)
- [M3 x 10 Socket Head Screw](#) (84)
- [M3 Washer](#) (80)
- [M3 Nut](#) (16)

Step 1 — Install Front



- i** You may need to loosen the bottom corner cubes and base acrylic panel. This will ensure all mating faces are not under tension.
- Using (16) M3 x 10 socket head screws and (16) M3 washers attach the front acrylic panel.

Step 2 — Install Right Acrylic



- Using (16) M3 x 10 socket head screws and (16) M3 washers attach the right acrylic panel.

Step 3 — Install Rear Acrylic



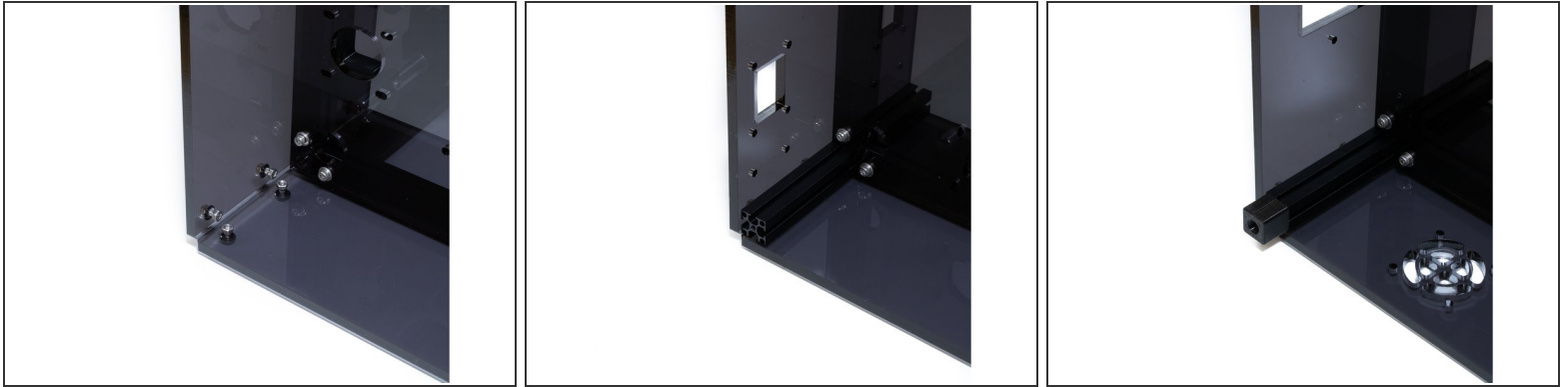
- Using (16) M3 x 10 socket head screws and (16) M3 washers attach the rear acrylic panel.

Step 4 — Install Left Acrylic



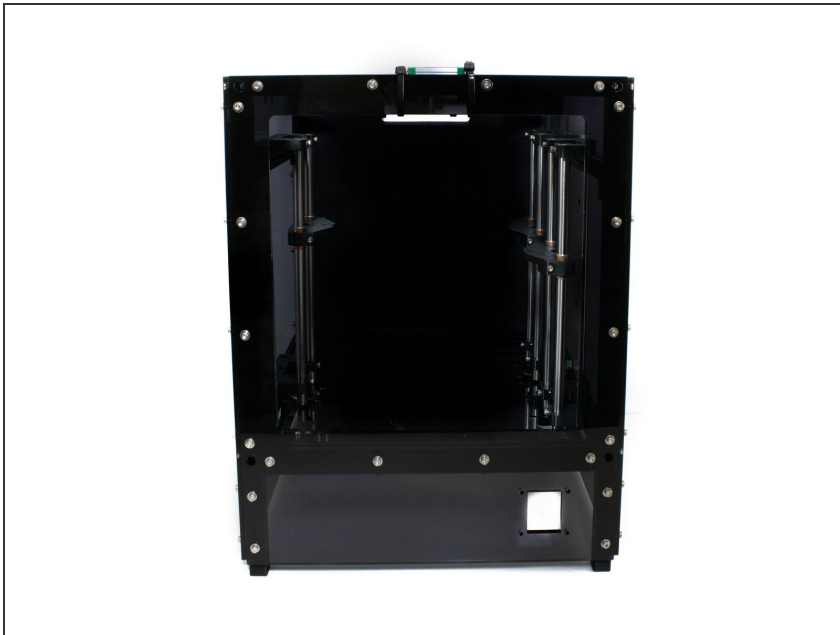
- Using (16) M3 x 10 socket head screws and (16) M3 washers attach the left acrylic panel.
- ⓘ Tighten the corner cubes and panels you may have loosened.

Step 5 — Install Feet (x4)



- Insert (4) M3 x 10 socket head screws and (4) M3 washers into each corner.
- Thread (4) M3 nuts onto the screws you inserted.
- Slide the 73 mm 1515 extrusion on the (4) M3 nuts and tighten the socket head screws.
- Attach the printed foot to the bottom of the extrusion using a M3 x 10 socket head screw.

Step 6 — Complete Side Installation



- Panel assembly complet.