

# railcore

## O) Bed

Written By: Tony Akens

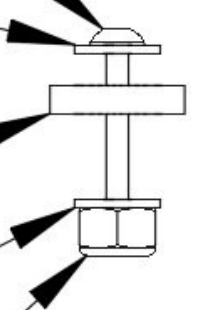
m3 x 20mm Button Head Bolt

M3 Fender Washer

$\frac{1}{4}$  Rubber Washer

M3 Fender Washer

m3 Nylock Nut



## Step 1 — Assemble the Bolt Stacks for Attaching the bed

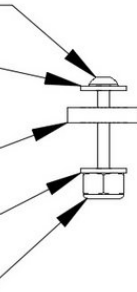
**m3 x 20mm Button Head Bolt**

**M3 Fender Washer**

**$\frac{1}{4}$  Rubber Washer**

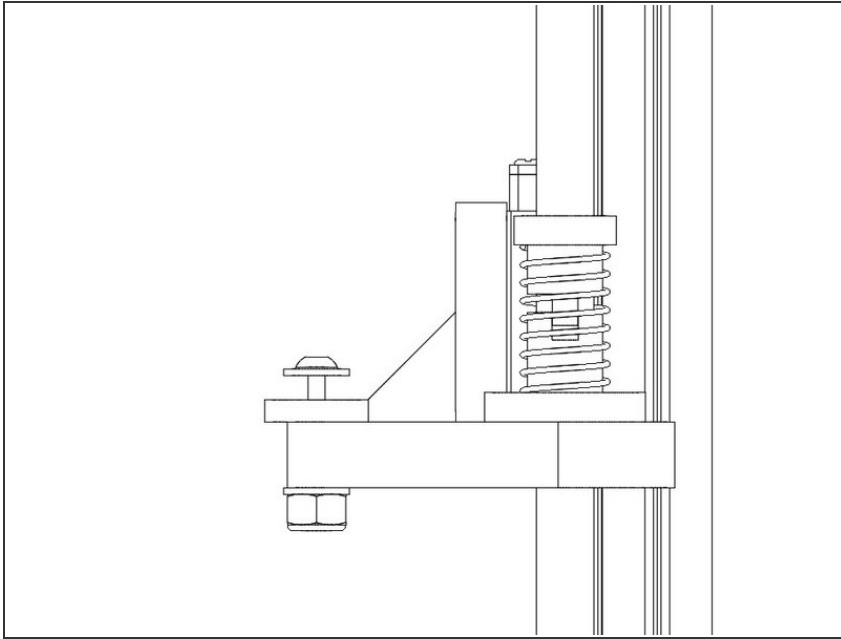
**M3 Fender Washer**

**m3 Nylock Nut**



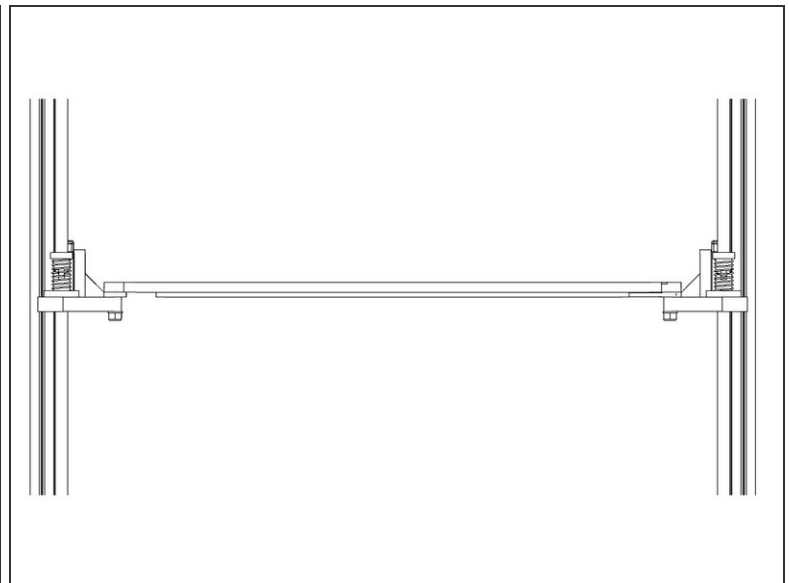
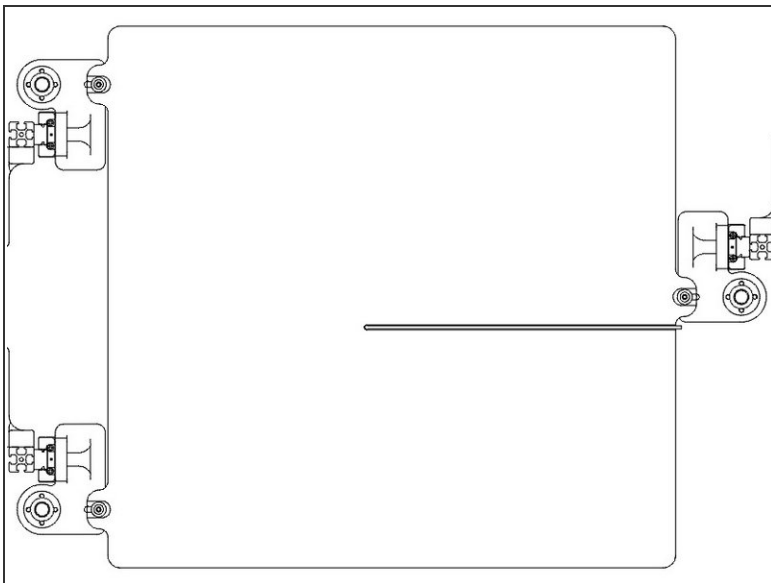
- It works best to build the bolt stacks for attaching the bed, then put them in place on the yokes.
- (Filastruder kits use a Socket Cap Head Screw in place of a button head bolt)
- On a 20mm Button Head Bolt place:
  - (1) M3 Fender Washer
  - 1/4 rubber washer
  - (1) M3 Fender Washer
  - (1) m3 Nylock Nut

## Step 2 — Put Bolt Stacks on the Yokes



- Place the bolt stack on the yoke, so the Nylock nut and m3 fender washer are below the Yoke, and the 1/4 rubber washer is on top of the yoke.
- Repeat for all 3 yokes.
- ⓘ The right yoke gets a ground wire from the bed wiring harness above the top washer. (not yet pictured). This requires a 25mm bolt to do as shown, currently the kits ship with only 20mm bolts, leaving out the lower washer is temporary fix.

## Step 3 — Install Bed



- Install the bed by fitting it onto the yokes, with the best resting on the 1/4 rubber washers, and the m3 fender washer in the grooves on the bed tabs.
- Snug up the m3 nylock nuts to hold the bed in place.

